



You must print out your own course materials! None will be available at the class. Click on the link below to access:

www.tchpeducation.com/coursebooks/coursebooks_main.htm

If the link does not work, copy and paste the link (web page address) into your internet browser. Available 1 week prior to class.

Pharmacology for APRNs: Day 4 (days do not have to be taken in any order)

May 30, 2018

7:30 a.m. – 4:00 p.m.

**EES Room 4 (across the street from the
VA—see map)**

Description/Learning Outcomes

Prescribing medications has become a major part of the role of the advanced practice nurse. This program is designed to enhance your ability to safely and effectively prescribe medications for your patients. The learning outcome is to improve the knowledge base and critical thinking skills related to prescribing medications for patients.

Target Audience

This class is designed for Advanced Practice Nurses who prescribe medications; however other health professionals are welcome to attend.

7:30 - 7:45 a.m.	Registration	
7:45 – 9:15 a.m.	Abnormal liver tests	Jesse Powell
9:15 – 10:30 a.m.	Hepatitis A, B & C	Jesse Powell
10:30 – 10:45 a.m.	Break	
10:45 a.m.– noon.	Skin Cancer	Elizabeth Norheim
12:00 – 12:45 p.m.	Lunch	
12:45 – 1:30 p.m.	Mental Health	Kimberly Wolf
1:30 -2:15 p.m.	Addiction Medicine	Catherine Earl-Torniainen
2:15 - 2:30 p.m.	Break	
2:30 - 4:00 p.m.	Vaccines	Peter Mitchell

Continuing Education Credit

<p>For attending this class, you are eligible to receive:</p>	<p>7.00 contact hours</p> <p>Criteria for successful completion: All participants must attend the program and complete the online evaluation form to receive contact hours. Note that you must attend the ENTIRE activity to receive contact hours for it. Participants successfully completing the class are eligible to receive up to 7.00 contact hours that are designed to fulfill ANCC Pharmacotherapeutic criteria for recertification.</p> <p>The Twin Cities Health Professionals Education Consortium is an approved provider of continuing nursing education by the Wisconsin Nurses Association, an accredited approver by the American Nurses Credentialing Center's Commission on Accreditation.</p>
---------------------------------------------------------------	----------------------------------------------------------------------------------------------------------------------------------------------------------------------------------------------------------------------------------------------------------------------------------------------------------------------------------------------------------------------------------------------------------------------------------------------------------------------------------------------------------------------------------------------------------------------------------------------------------------------------------------------------------------------------------------------------------------------------------

Please Read!

- Check the attached map for directions to the class and assistance with parking.
- A certificate of attendance will be emailed to you upon completion of the online program evaluation.
- You should dress in layers to accommodate fluctuations in room temperature.
- Food, beverages, and parking costs are your responsibility.
- If you are unable to attend after registering, please notify the Education Department at your hospital or TCHP at 612-873-2225.
- In the case of bad weather, call the TCHP office at 612-873-2225 and check the answering message to see if a class has been cancelled. If a class has been cancelled, the message will be posted by 5:30 a.m. on the day of the program.
- More complete class information is available on the TCHP website at www.tchpeducation.com.

EES Auditorium

Across the street from the Minneapolis VA Health Care System in Building 9

5445 Minnehaha Ave. S., Building 9; Minneapolis, MN 55417; (please note that both Mapquest and Google maps show the building to be off of Minnehaha, however, the parking lot can only be accessed from 54th Street)
Classroom phone #: 612-725-2000, extension 4543

Directions to the EES

From the East (St. Paul): Take 35E south to West 7th/Highway 5 exit. Turn right at the top of the exit ramp. Continue on 5 to the Fort Snelling exit and stay to the right as you follow the exit around. You will “Y” into traffic coming from the Mendota Bridge. Move to the right and exit on 55 west. As you exit on 55 west, it will “Y” almost immediately. Stay to the right and go to the next stoplight (54th) and turn left.
*Continue with directions below.

From the Southeast: Take 35E to 110 west. Take the 55 west/Fort Snelling exit. Go to the far righthand lane as soon as you exit to continue on 55 west. Go over the Mendota Bridge, move to the right lane and exit to follow 55 west. As you exit on 55 west, it will “Y” almost immediately. Stay to the right and go to the next stoplight (54th) and turn left. *Continue with directions below.

From the North: Take 35W south to 62 east. Get into the right lane on 62 and exit on 55 west. At the top of the exit ramp, turn left to continue on 55 west. Go to the 2nd stoplight (54th) and turn left. *Continue with directions below.

From the South: Take 35W north to 62 east. Get into the right lane on 62 and exit on 55 west. At the top of the exit ramp, turn left to continue on 55 west. Go to the 2nd stoplight (54th) and turn left. *Continue with directions below.

From the West: Take 494 east to 35W north. Take 62 east. Get into the right lane on 62 and exit on 55 west. At the top of the exit ramp, turn left to continue on 55 west. Go to the 2nd stoplight (54th) and turn left. *Continue with directions below.

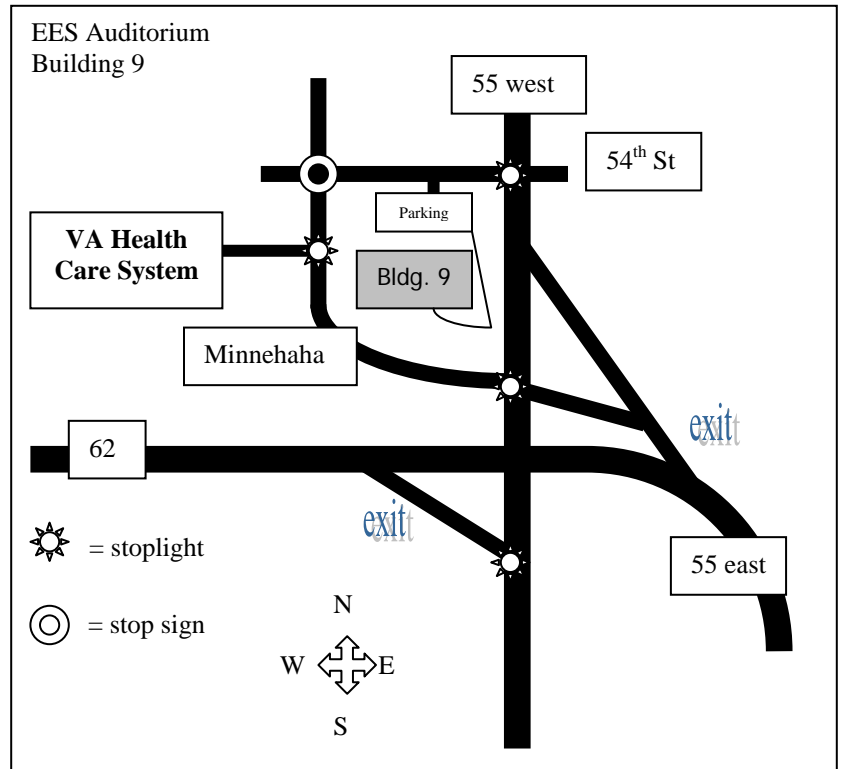
***Directions, continued:** After turning onto 54th, take the 2nd left into the Federal Employees Credit Union parking lot. Go to the back of the lot and park. Take the sidewalk in the southeast corner of the parking lot around to the back door of building 9 (in the patio area). There are 2 different entrances. The first one you see is always locked. You need to continue around to the 2nd entrance in the patio area—it is not visible from the parking lot. Please note that the back door is not opened until 7:15 a.m. If the back door is locked, go to the front of the building and take the elevator to the lower level, the classroom is at the end of the hallway.

Light Rail Transit: The LRT line stops right in front of the VA. Feel free to utilize the park and ride lots and take the LRT to the VA. Go to the LRT website for information about where to park, fares, and how to ride:

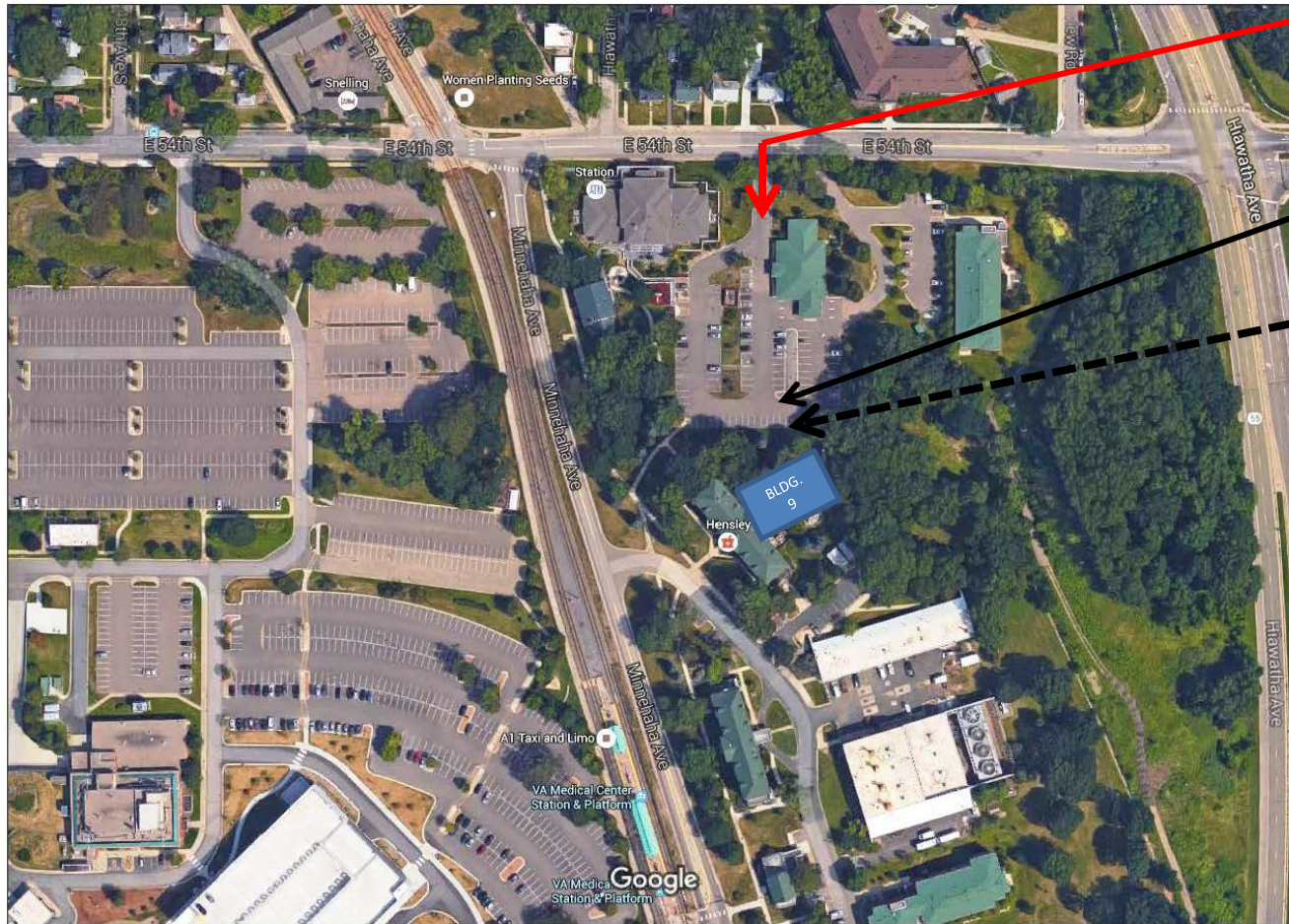
<http://www.metrocouncil.org/transit/rail/index.htm>

Please Note:

Lunch is not available in this building. You may want to bring your own lunch to the program. A microwave is available to warm up food. Vending machines are available for soda and snacks.



EES Auditorium, Bldg. 9: Where do I park?



Turn HERE

Park HERE

Take walkway
to back
entrance of
building 9

Enter parking lot from 54th Street. Turn into the HiWay Credit Union and park at the back of the lot. Bldg. 9 shares the parking lot with the Credit Union.