

EES Auditorium

Across the street from the Minneapolis VA Health Care System in Building 9

5445 Minnehaha Ave. S., Building 9; Minneapolis, MN 55417; (please note that both Mapquest and Google maps show the building to be off of Minnehaha, however, the parking lot can only be accessed from 54th Street)
Classroom phone #: 612-725-2000, extension 4543

Directions to the EES

From the East (St. Paul): Take 35E south to West 7th/Highway 5 exit. Turn right at the top of the exit ramp. Continue on 5 to the Fort Snelling exit and stay to the right as you follow the exit around. You will “Y” into traffic coming from the Mendota Bridge. Move to the right and exit on 55 west. As you exit on 55 west, it will “Y” almost immediately. Stay to the right and go to the next stoplight (54th) and turn left.
*Continue with directions below.

From the Southeast: Take 35E to 110 west. Take the 55 west/Fort Snelling exit. Go to the far righthand lane as soon as you exit to continue on 55 west. Go over the Mendota Bridge, move to the right lane and exit to follow 55 west. As you exit on 55 west, it will “Y” almost immediately. Stay to the right and go to the next stoplight (54th) and turn left. *Continue with directions below.

From the North: Take 35W south to 62 east. Get into the right lane on 62 and exit on 55 west. At the top of the exit ramp, turn left to continue on 55 west. Go to the 2nd stoplight (54th) and turn left. *Continue with directions below.

From the South: Take 35W north to 62 east. Get into the right lane on 62 and exit on 55 west. At the top of the exit ramp, turn left to continue on 55 west. Go to the 2nd stoplight (54th) and turn left. *Continue with directions below.

From the West: Take 494 east to 35W north. Take 62 east. Get into the right lane on 62 and exit on 55 west. At the top of the exit ramp, turn left to continue on 55 west. Go to the 2nd stoplight (54th) and turn left. *Continue with directions below.

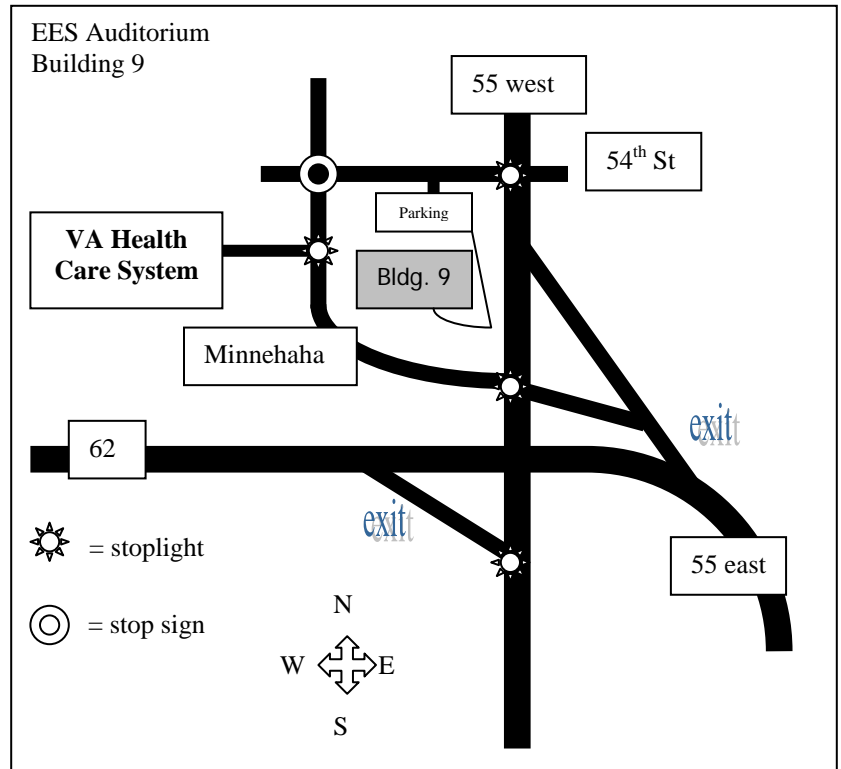
***Directions, continued:** After turning onto 54th, take the 2nd left into the Federal Employees Credit Union parking lot. Go to the back of the lot and park. Take the sidewalk in the southeast corner of the parking lot around to the back door of building 9 (in the patio area). There are 2 different entrances. The first one you see is always locked. You need to continue around to the 2nd entrance in the patio area—it is not visible from the parking lot. Please note that the back door is not opened until 7:15 a.m. If the back door is locked, go to the front of the building and take the elevator to the lower level, the classroom is at the end of the hallway.

Light Rail Transit: The LRT line stops right in front of the VA. Feel free to utilize the park and ride lots and take the LRT to the VA. Go to the LRT website for information about where to park, fares, and how to ride:

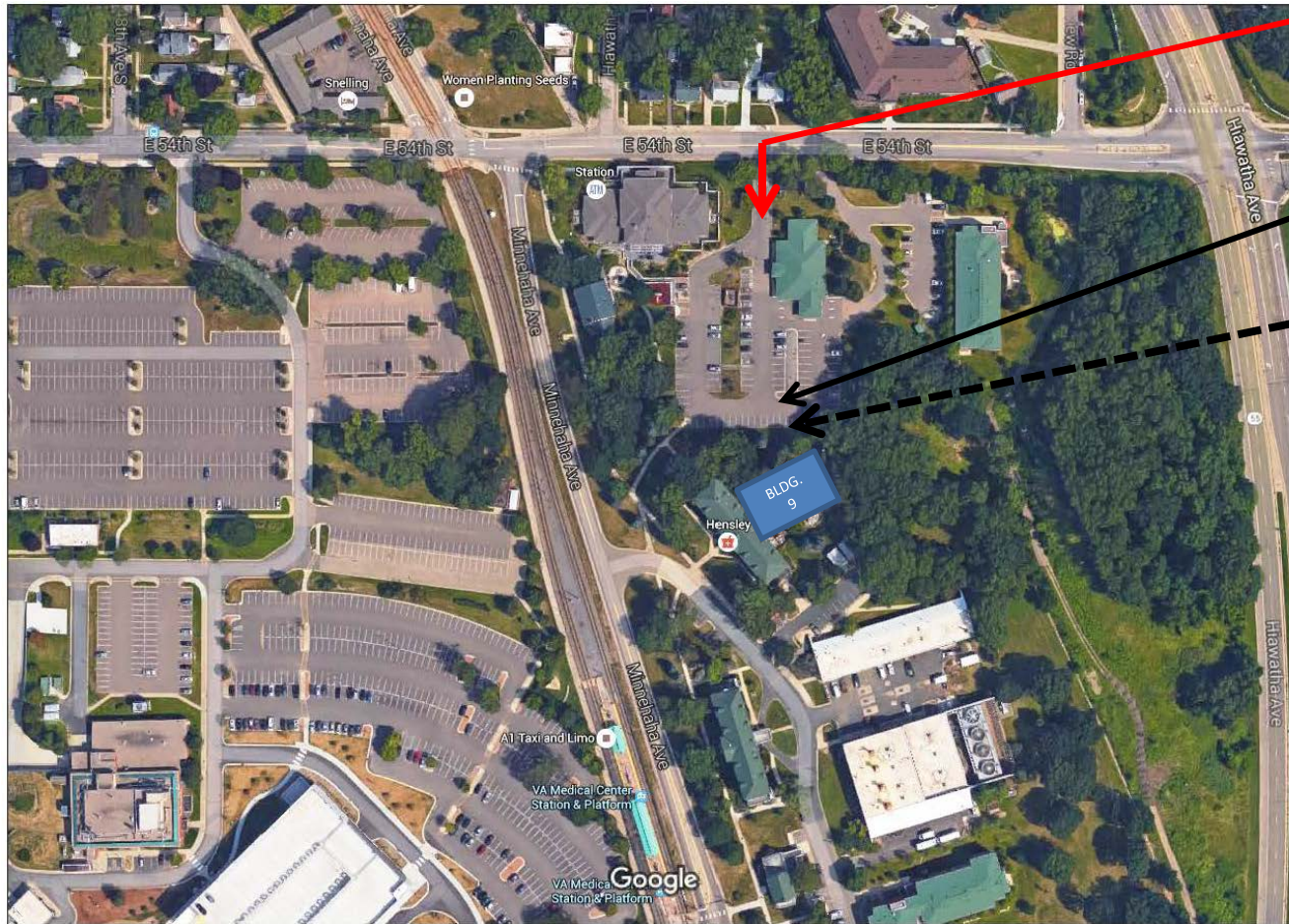
<http://www.metrocouncil.org/transit/rail/index.htm>

Please Note:

Lunch is not available in this building. You may want to bring your own lunch to the program. A microwave is available to warm up food. Vending machines are available for soda and snacks.



EES Auditorium, Bldg. 9: Where do I park?



Turn HERE

Park HERE

Take walkway
to back
entrance of
building 9

Enter parking lot from 54th Street. Turn into the HiWay Credit Union and park at the back of the lot. Bldg. 9 shares the parking lot with the Credit Union.